



APRIL 2022

Alteryx Tips & Tricks

By

DATA PREP U

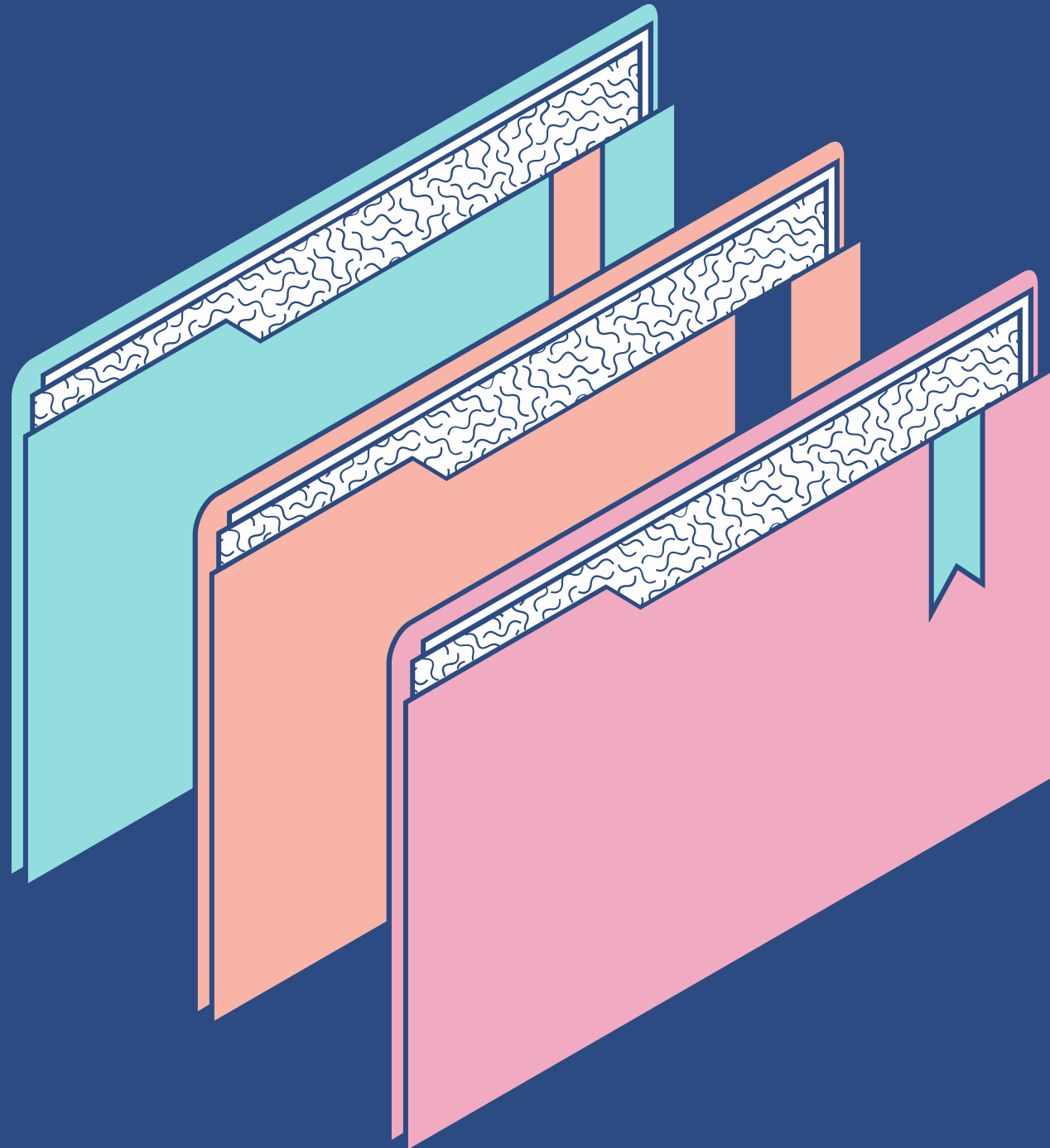


Less is More

THE BASIC FOUNDATION OF ALTERYX IS
IN HOW IT PROCESSES DATA

Alteryx primarily processes data one record at a time. While this seems tedious, think of it being able to dedicate immense resources for one single record, then repeating that thousands, hundreds of thousands, and millions of times.

Runtime Settings



Workflow - Configuration

Canvas Workflow **Runtime** Events Meta Info XML View

Memory Limit

☒ Use Global Default

☐ Use Specific Amount: 10223 Megabytes

Temporary files

☒ Use Global Default

☐ Use Specific Folder: C:\ProgramData\Alteryx\Engine

Conversion Errors

☒ Limit Conversion Errors

Maximum Errors per Location: 10

☐ Stop Processing When Limit is Reached

Predictive Tools Code Page

Western European (CP 1252)

Record Limit for All Inputs: No Limit

☐ Cancel Running Workflow on Error

☐ Disable All Browse Tools

☐ Show All Macro Messages

☐ Disable All Tools that Write Output

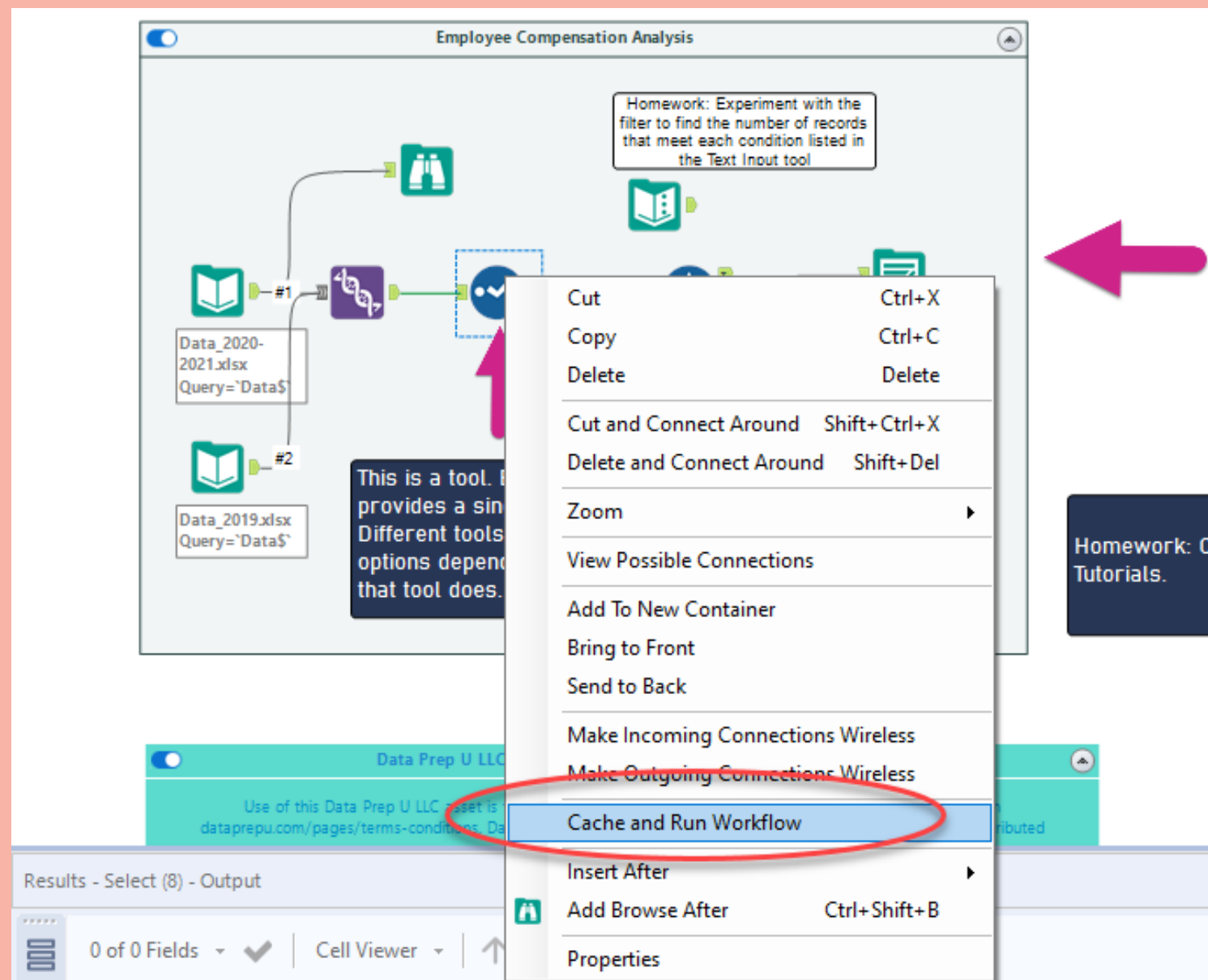
☐ Enable Performance Profiling

☐ Use AMP Engine

☐ Engine compatibility mode

Cache Your Workflow!

REDUCE DEVELOPMENT TIME BY CREATING STRATEGIC CACHE POINTS



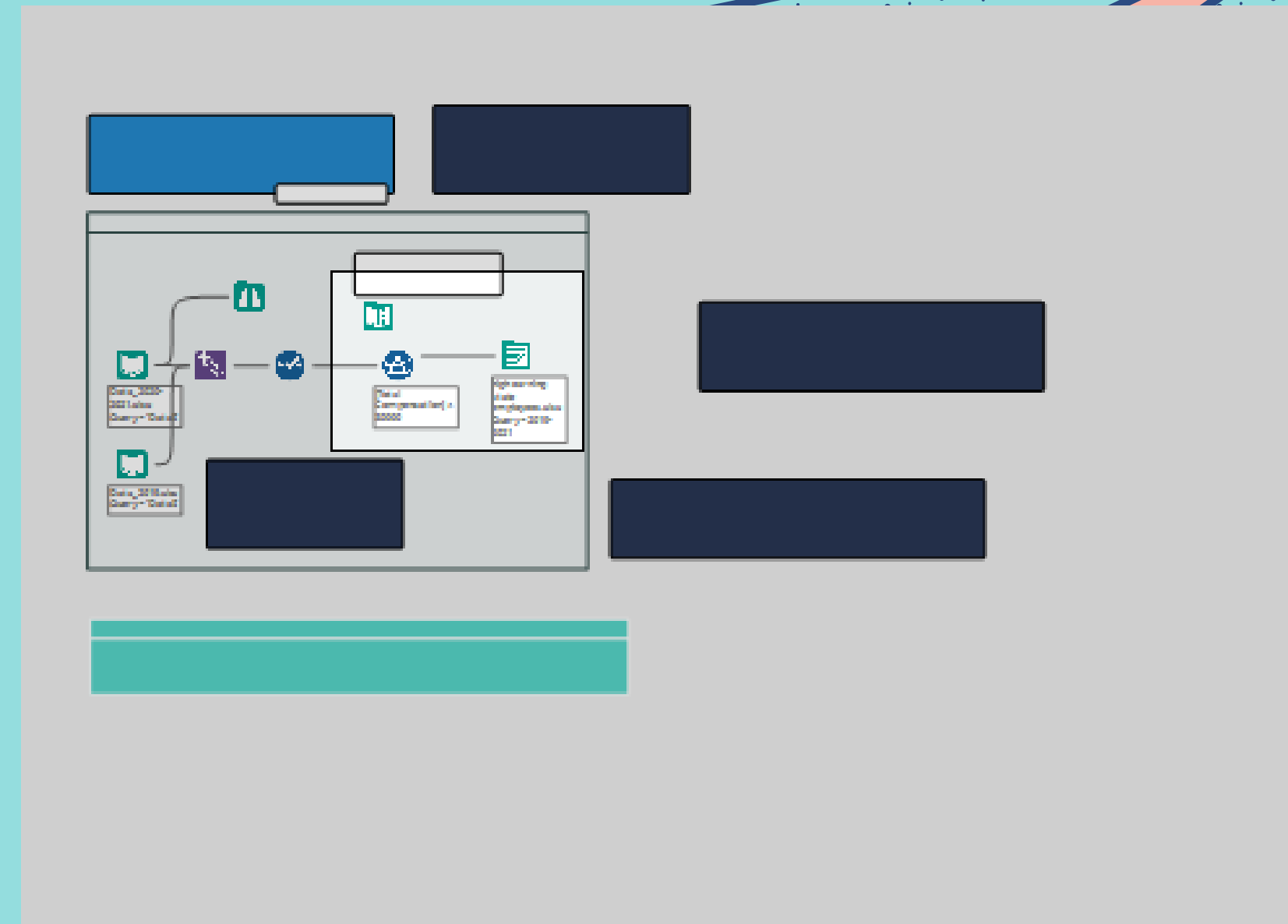
Fewer tools = Faster processing

Caching creates a temporary .yxdb file at a mid-point in your workflow. This allows for a workflow to be run from this point, rather than having to run the entire workflow every time.

Enable the Overview Window

CLICK VIEW -> OVERVIEW

Enabling the Overview Window can be extremely helpful for navigating large workflows.





Input Data Record Limit

VS.

Sample Tool Limit

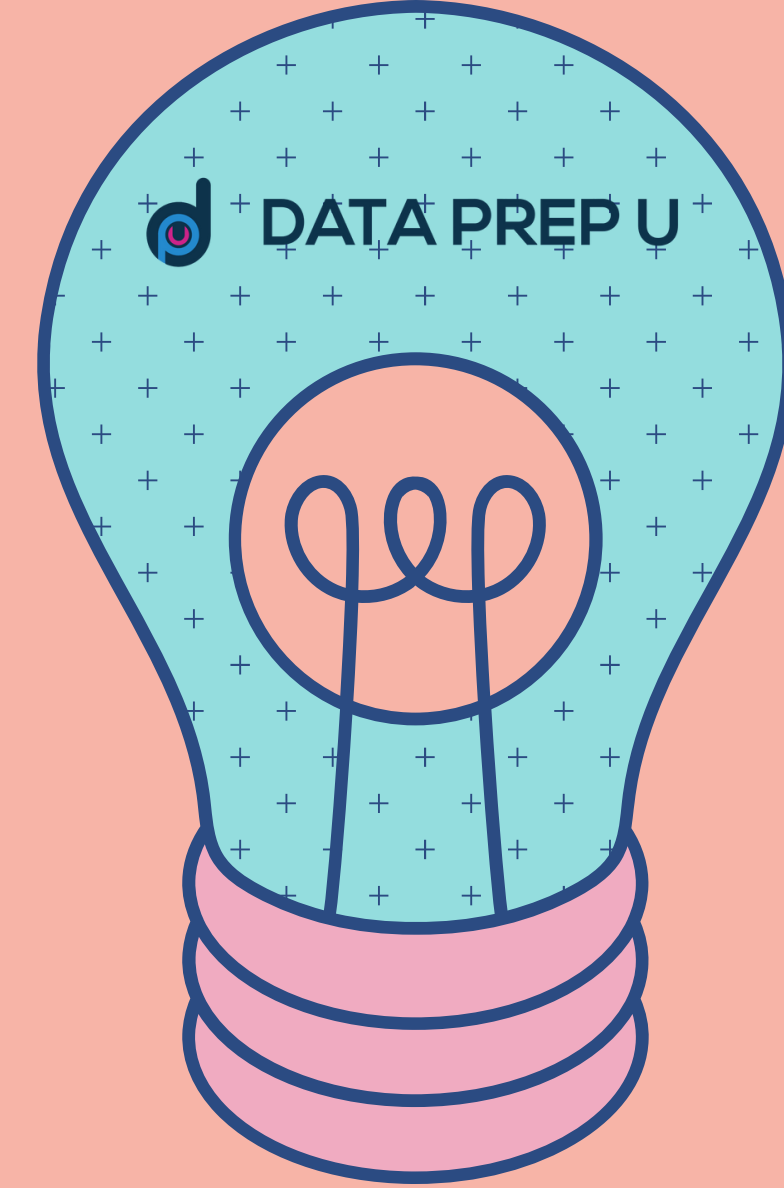
- Cuts off reading in data as soon as the limit is reached.
- Much faster for initial development.
- Not as widely known so can be tougher to troubleshoot.

- Cuts off reading in data as soon as the limit is reached.
- More widely known, easier to troubleshoot.
- Prior tools will continue to fully process.

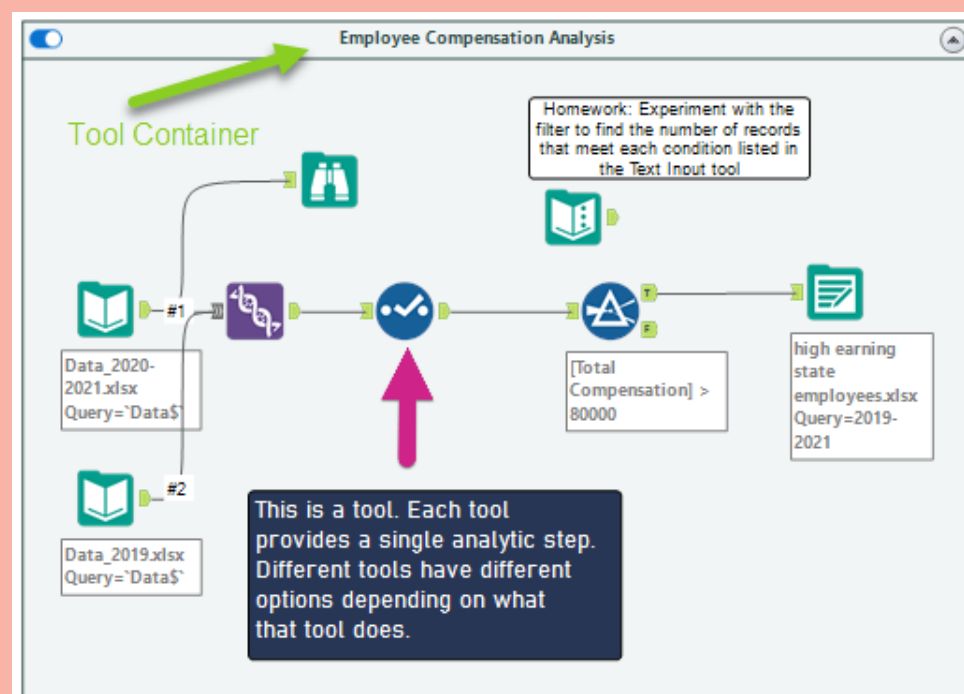
- Hint! Use the Sample Tool with

Document Your Workflows!

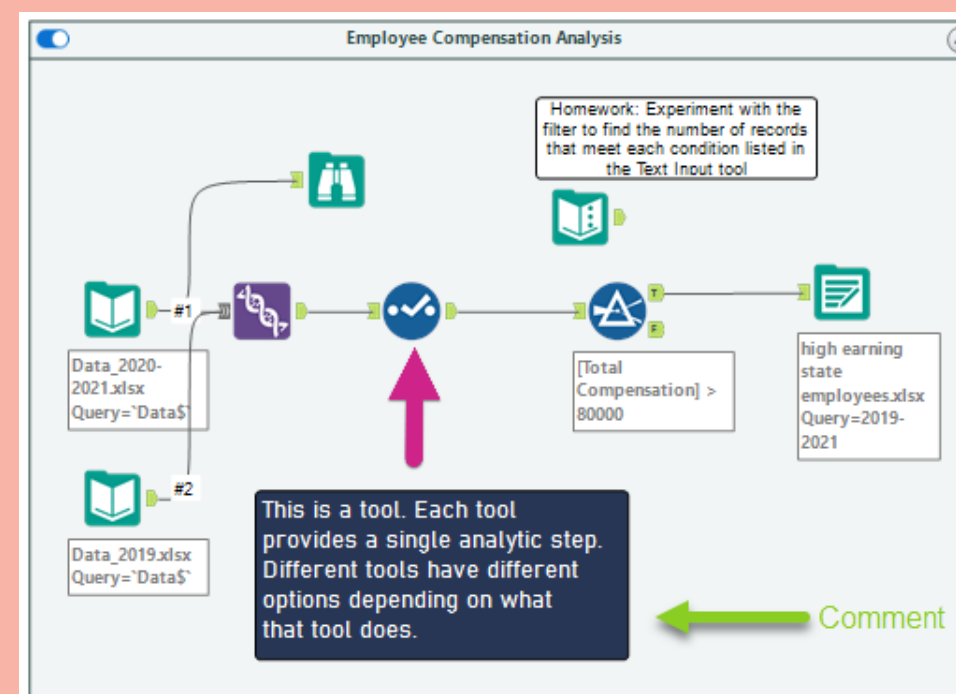
COME UP WITH A STANDARD FOR YOUR TEAM'S DOCUMENTATION



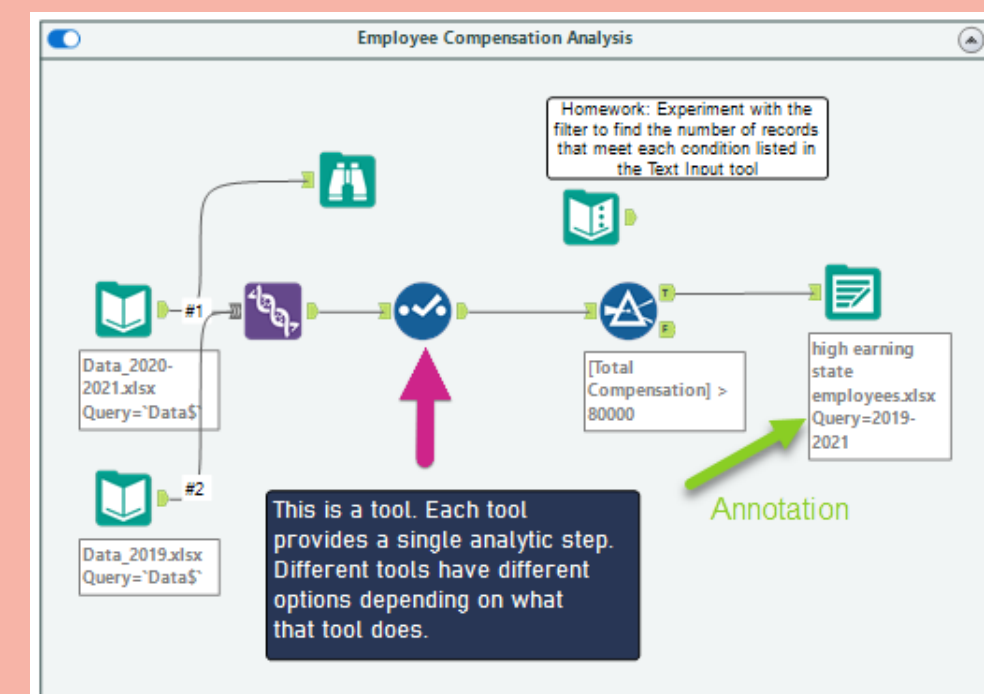
Tool Containers

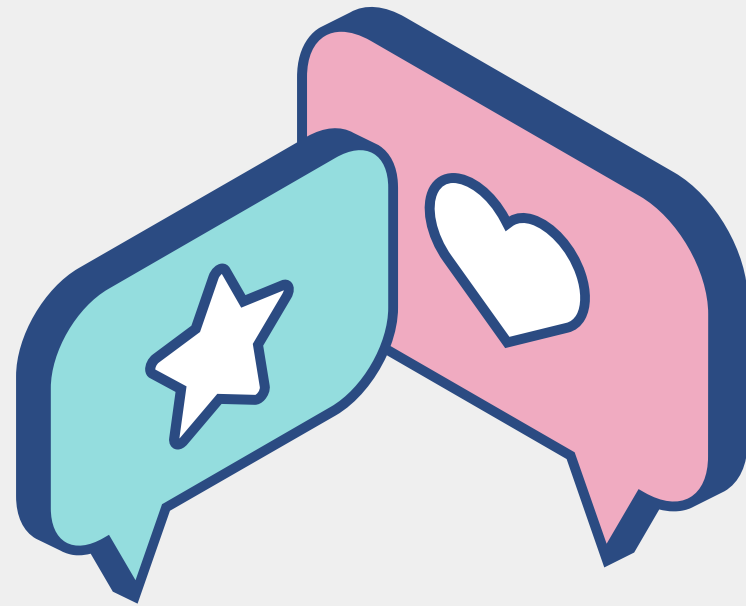


Comment Tools



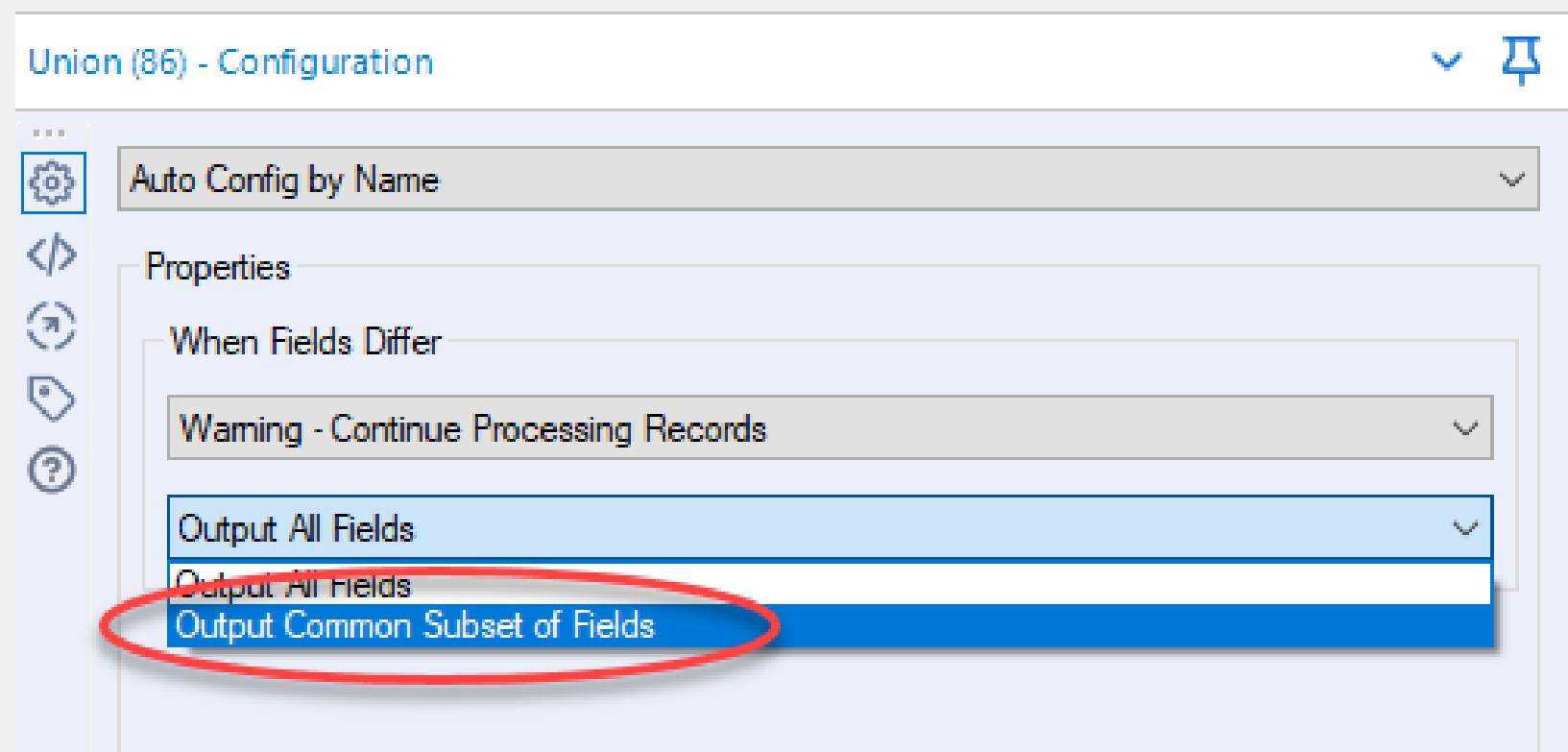
Annotations





Union Tool Tips

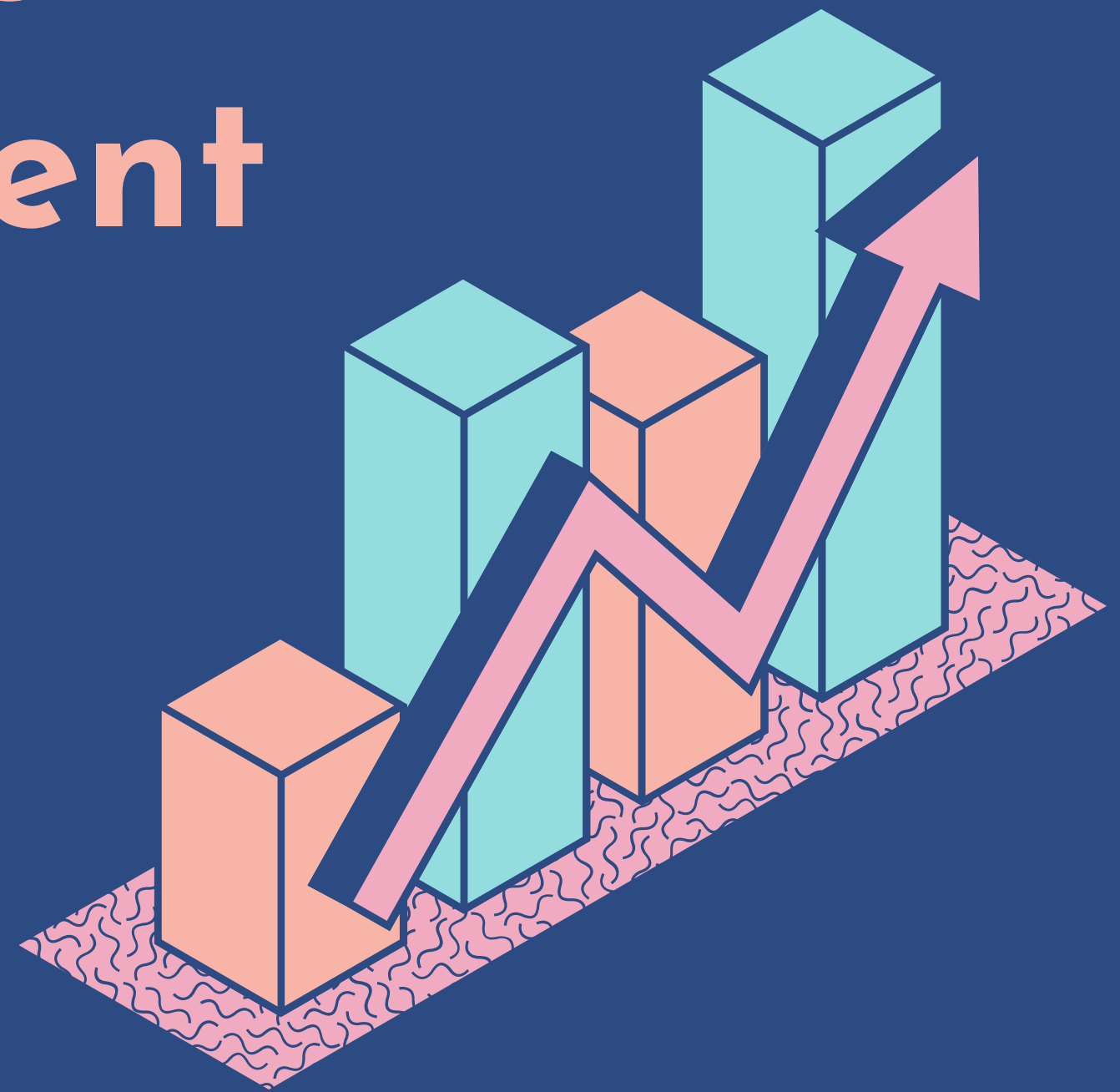
- Use "Output Common Subset of Fields" to preserve desired field names.
- Pair this with a Sample tool, set to First N rows (where N=0) to ensure your field names remain exact.



Use Auto Field Tool Only In Development

The Auto Field tool is excellent for using the most efficient workflows. However, it also requires more processing power, so isn't ideal for production level workflows.

Pair the Auto Field tool with a Select tool immediately after, and save your field configuration in a .yxft file, then remove the Auto Field tool and set your Select to use your field configuration file.

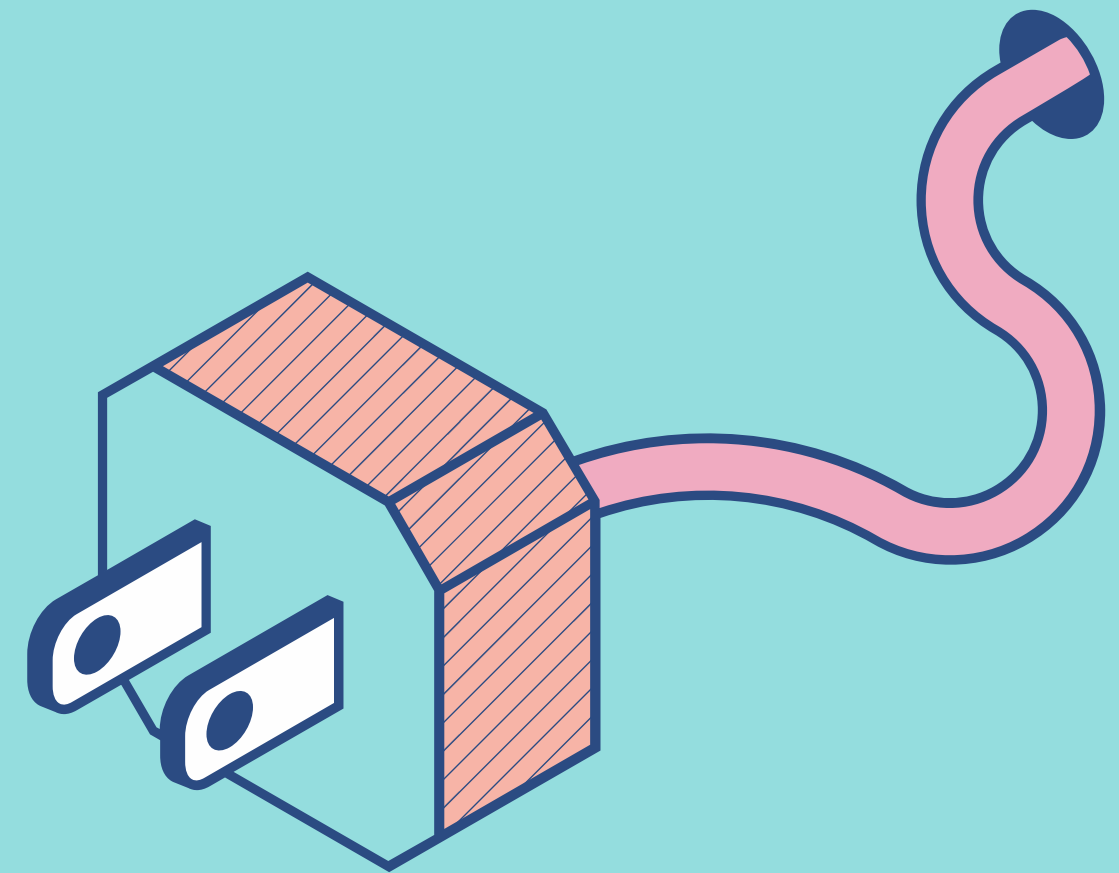


Input CSVs When There Are Extra Delimiters

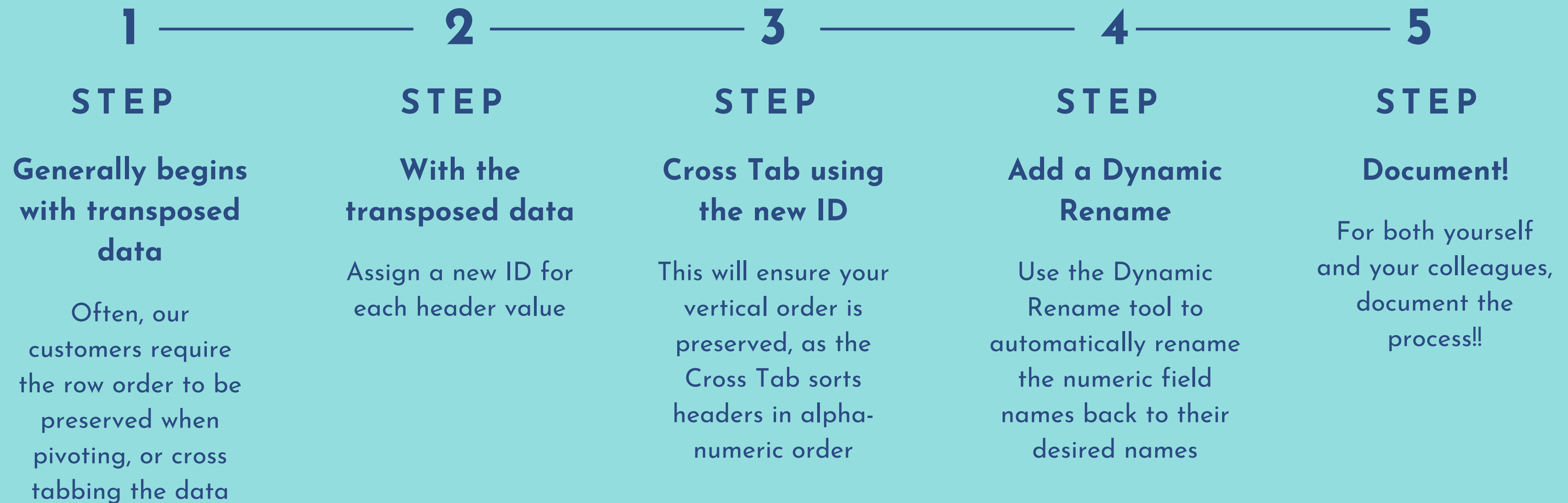
Sometimes you may encounter the error "Too many fields...". This is when there are extra delimiters in your data, often in addresses.

To counteract this, use \0 as your delimiter (rather than a comma), then use the Text to Columns tool to begin parsing.

Too many fields in record #1



Preserving Field Order With Cross Tab





Thank You!

Charlie Blazer
cbblazer@dataprepu.com