

Alteryx Analytics Cloud ***Designer Cloud Telemetry***

Actionable Insights from Job Execution Data

alteryx

“ SaaS platforms execute complex workflows and jobs in today's cloud-driven era, but a lack of analytics hinders operational efficiency.

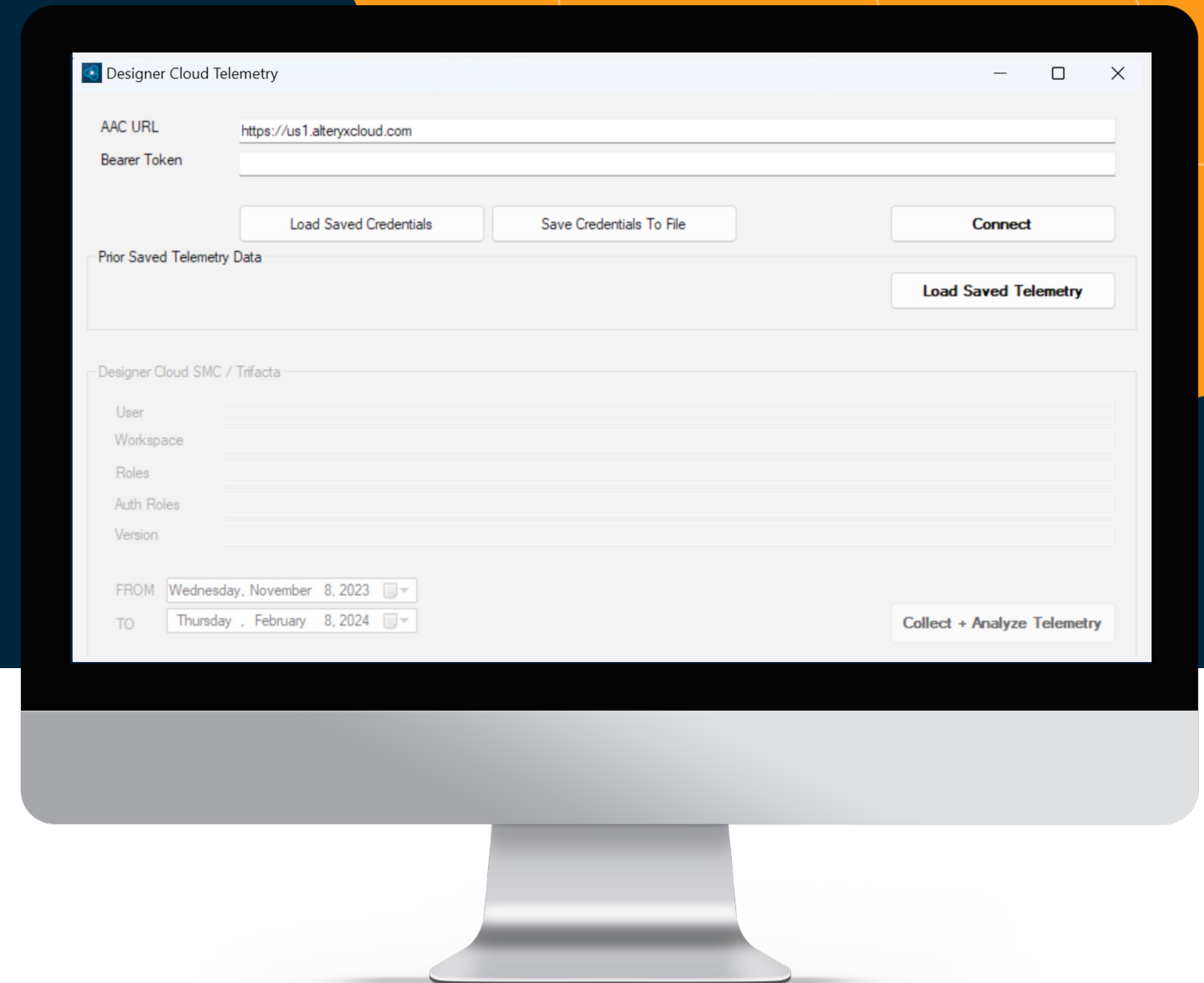
By harnessing job execution data analytics, businesses can uncover inefficiencies, optimize resources, and drive transformative improvements.

Login + Accessing Data

The default Endpoint (Server URL) is **Alteryx Analytics Cloud** , in which case leave it as is, and the API token. Otherwise, if it is **Designer Cloud SMC (Trifacta)** or **Designer Cloud AWS SaaS** , please point to the same URL to access the server login page or API Endpoint URL

To access all jobs, you should use a token of an Admin account, otherwise, you will only collect the jobs that the user has access to.

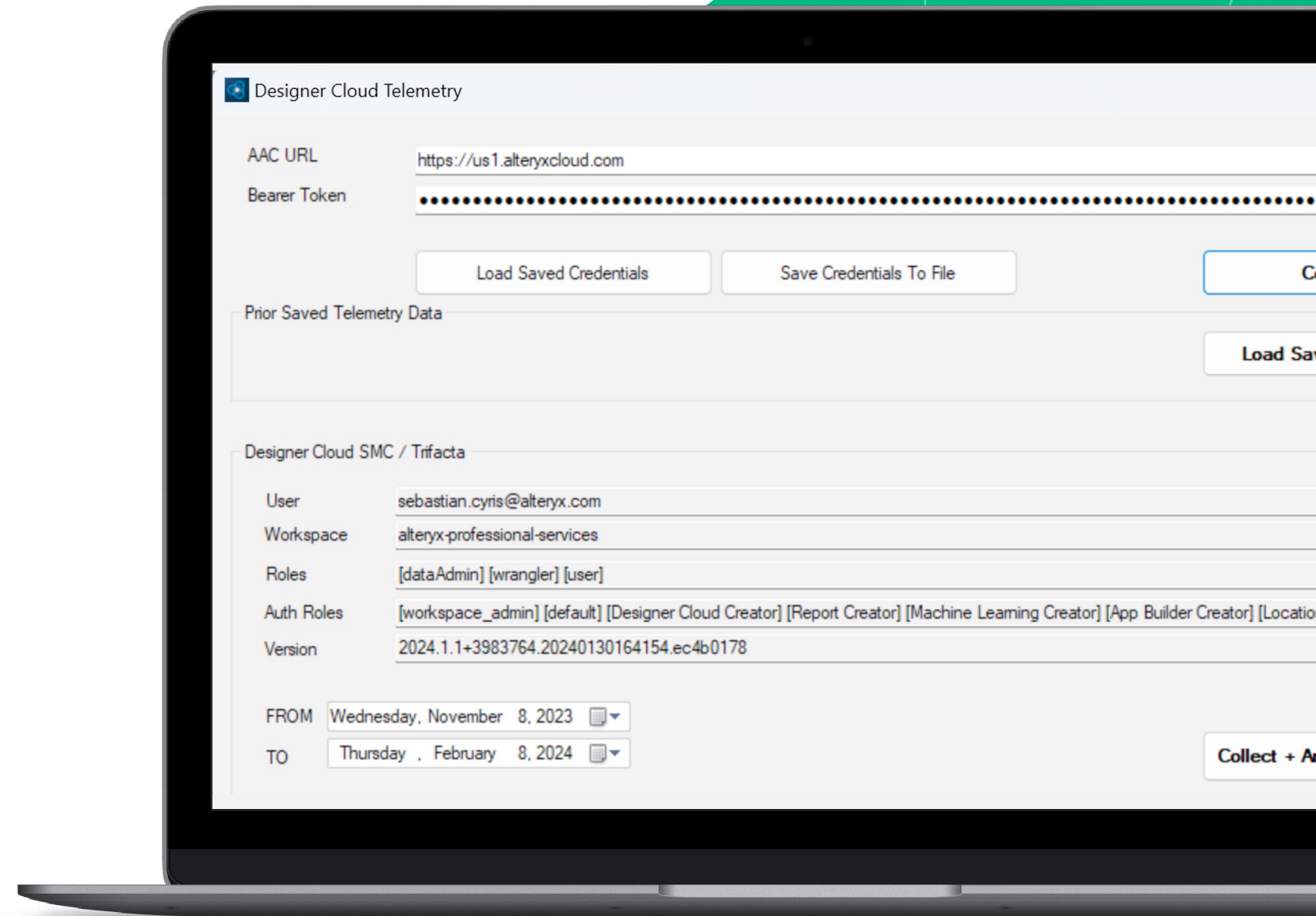
For more info on generating Access Tokens, see <https://help.alteryx.com/aac/en/platform/profile/preferences-page/access-tokens-page.html>



You can save and load the URL and API token by clicking on the **Save Credentials To File** or **Load Saved Credentials**. The files are encrypted and secure.

Once you enter the API token, you can test it by clicking the **Connect** button. It will display User information as well as the Server version as a reference

If you have a previously saved Dataset from the Telemetry tool, you can open it by clicking **Load Saved Telemetry**. This will effectively allow you to analyze data offline without the need to download any data or connect to the Server. Comes in handy in restricted environments.

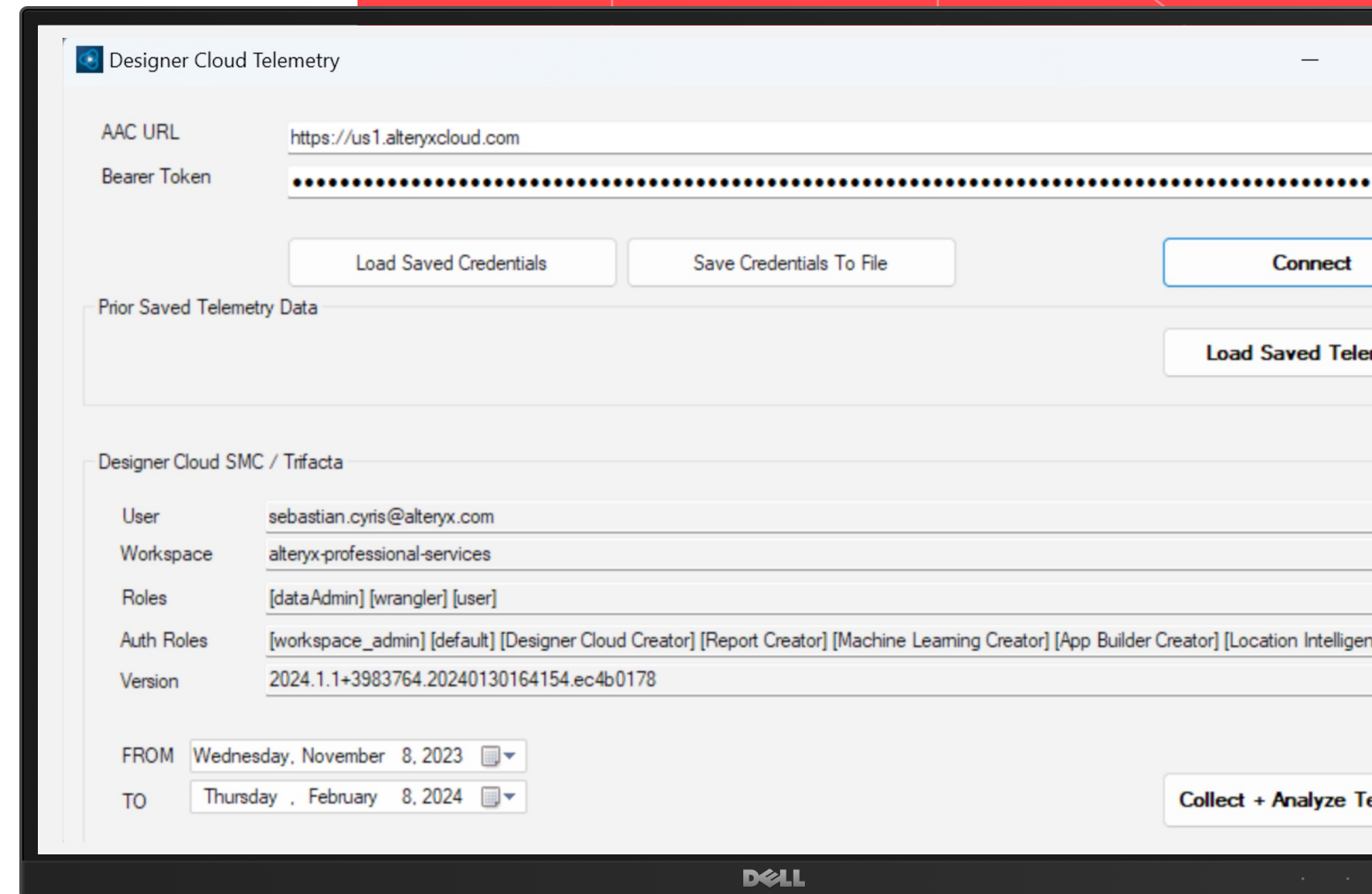


In the bottom left, you can enter the Date Range of the jobs you want to investigate.

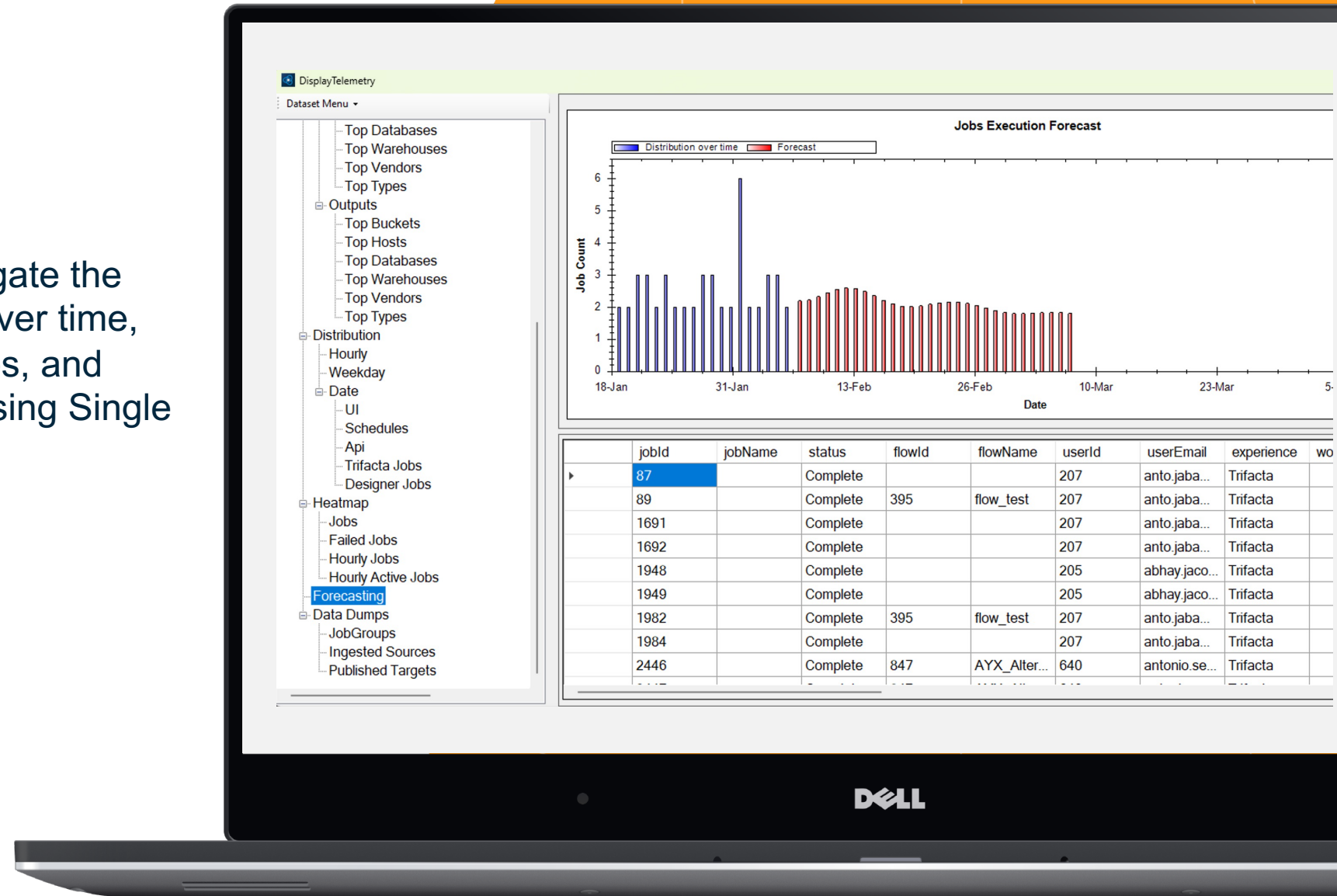
The default is 3 months from the current Date. This will provide a good understanding of the load you are seeing and how long it will take to access and download the job information

Note: Only Metadata will be accessed and loaded!
NO ACTUAL PROCESSED DATA WILL BE ACCESSED !

Note: Due to data volume and potential API throttling it may take some time to load all the data from the server. If you want to abort the loading of the data, simply hit the **ESC** key and it will let you abort



Once the data has been loaded, you will be able to investigate the job distribution within the timeframe. Such as distribution over time, throughout the week, throughout the day, viewing heatmaps, and using the power of Machine Learning to forecast jobs by using Single Spectrum Analysis (SSA)

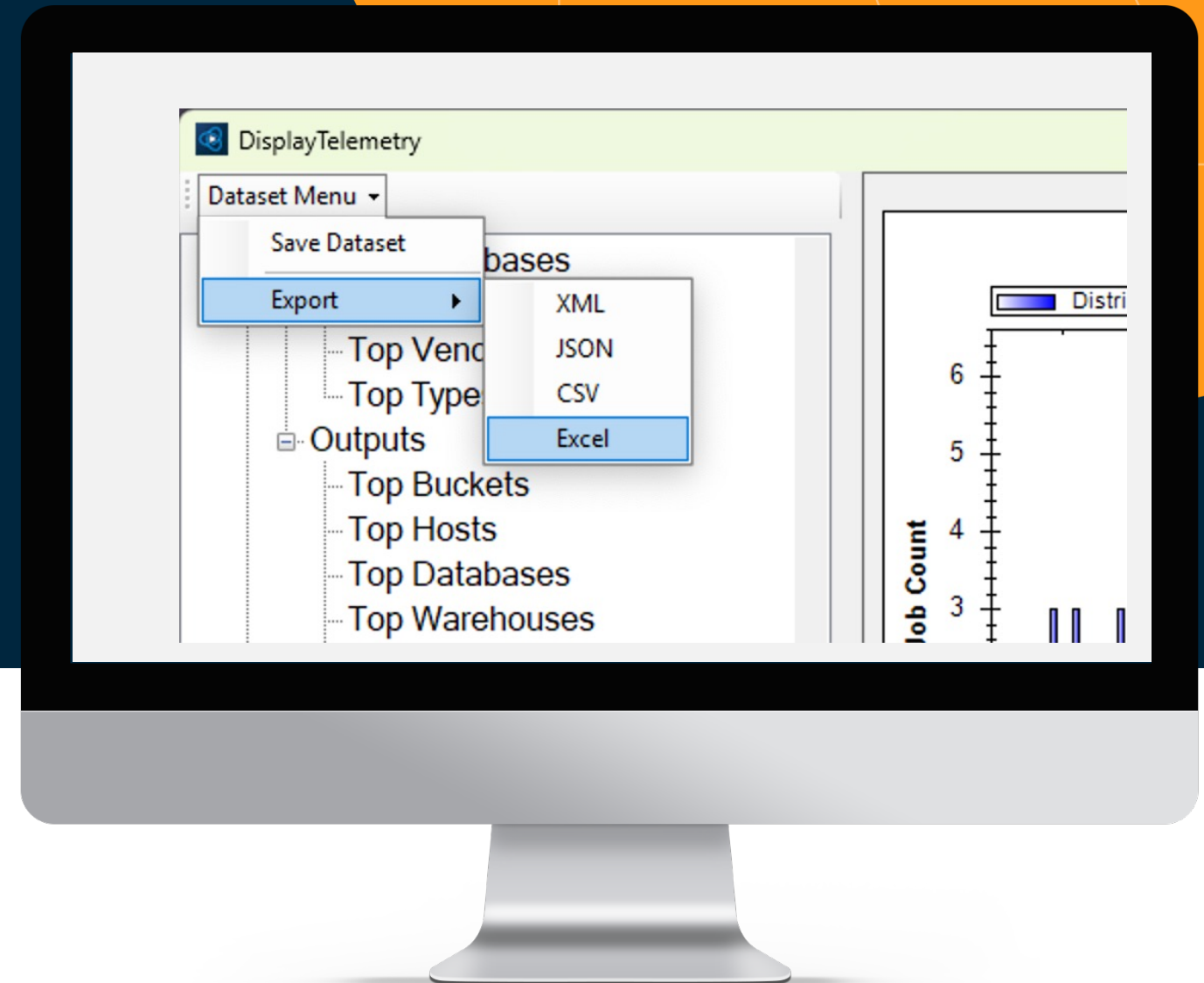


Data Export

If you want to export data sets, go to the menu on the top left side, and select **Export** and the data format in which the data set should be exported to.

TIP: By exporting the displayed data dumps you are exporting the data sets collected from the server. This will allow you to further analyze via alternate tools.

Note: Excel will create a report, including the data dumps and key distributions such as jobs by date, by weekday or by hour of execution as well as screenshots and heatmaps.



This Tool has been brought to you by **Alteryx Customer Solutions**

For general questions regarding Customer Solutions offerings, contact sam.johnson@alteryx.com

For questions regarding the Designer Cloud Telemetry Tool, contact sebastian.cyrus@alteryx.com

<https://www.alteryx.com/resources/professional-services>



alteryx

Alteryx Customer Solutions

Making better actionable, more profitable, decisions



ENGAGE CUSTOMER SOLUTIONS FOR:

DEPLOYMENT/MIGRATION

- Seamless Alteryx deployment and recommendations for configuration, administration, migration, and integration
- Support initial and ongoing configuration of Alteryx platform as needed
- Optimize existing workflows
- Shift to the cloud

GOVERNANCE

- Implement Governance framework enabling rapid development
- Generate insights using customer managed telemetry
- Control costs through license management and tracking

EFFICIENCY

- Collect and document business-critical processes and workstreams
- Develop automated, effective solutions

ANALYTICS DEMOCRATIZATION

- Provide on-site assistance for knowledge transfer
- Consolidation of multiple Centers of Excellence and/or Center of Enablement, identify best practices
- Leverage Alteryx to improve analytics capabilities and outputs

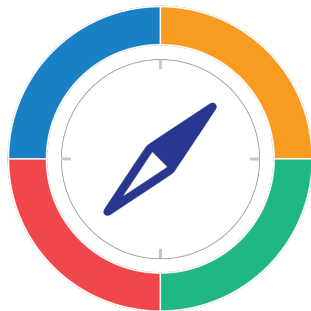
Alteryx Customer Solutions

Resident Consultancy

1 TRUSTED ADVISOR

Dedicated to your organization

Define, develop, and execute your vision for the Alteryx platform, accelerating your analytics capabilities, and/or creating process control and automation efficiencies



RESIDENT CONSULTANT

Understands business needs and goals
Defines and executes a plan to achieve them

2 WHAT TO EXPECT

An **integrated member** of your team

Industry insights and consulting experience to integrate Alteryx into the Enterprise

Expert and proven solutions from Alteryx:

- Opportunity identification
- Bespoke analytic solutions
- Unique data requirements
- Migration to cloud



alteryx

THANK YOU