

INTRODUCTION TO THE DVW ALTERYX CONNECTORS FOR SAP

ALTERYX CONNECTORS FOR SAP

Alteryx Connector for SAP (ACS) for SAP BW & SAP Business Suite



SAP BW
Query



SAP BW
InfoProvider



SAP
Table



SAP BW
Hierarchy



SAP BW
Text



SAP
Logon

Alteryx Connector for SAP Business Objects (ACS BOP)



SBOP Universe



SBOP Webi

Alteryx Data Loader for SAP BW (ADLS)



SAP BW Update

- Request a Free Trial: <http://www.dvwanalytics.com/free-trial.html>
- Product Demos: <http://www.dvwanalytics.com/product-demos.html>

ALTERYX CONNECTOR FOR SAP FEATURES

- Are installed as Alteryx plug-ins
- Run on Alteryx Designer & (optional) Alteryx Server
- Require no installation on SAP or BusinessObjects
- Require no additional hardware to run
- Connect directly to SAP & BusinessObjects using standard API's
- Respect the SAP & BusinessObjects authorisations of the user
- Do not require the staging of data
- Work seamlessly with the Alteryx tools
- Easy to use & quick to learn
- Enable automation & scheduling of workflows
- Free up countless hours of tedious data extraction, blending & preparation
- Enable big data & scalable analysis by circumventing the limitations of standard SAP tools
- Boost frequency with which analyses & reports can be prepared
- Minimize manual errors by removing Excel as a manual data staging area

ALTERYX CONNECTOR FOR SAP FUNCTIONALITY

Alteryx Connector for SAP

- SAP BW Queries
- SAP BW Query Views
- SAP BW InfoProviders (incl. InfoCubes, MultiProviders & InfoSets)
- SAP BW Texts
- SAP BW Hierarchies
- SAP Tables (e.g. from SAP ECC, SAP CRM, SAP CRM, SAP HCM, SAP BW etc.)

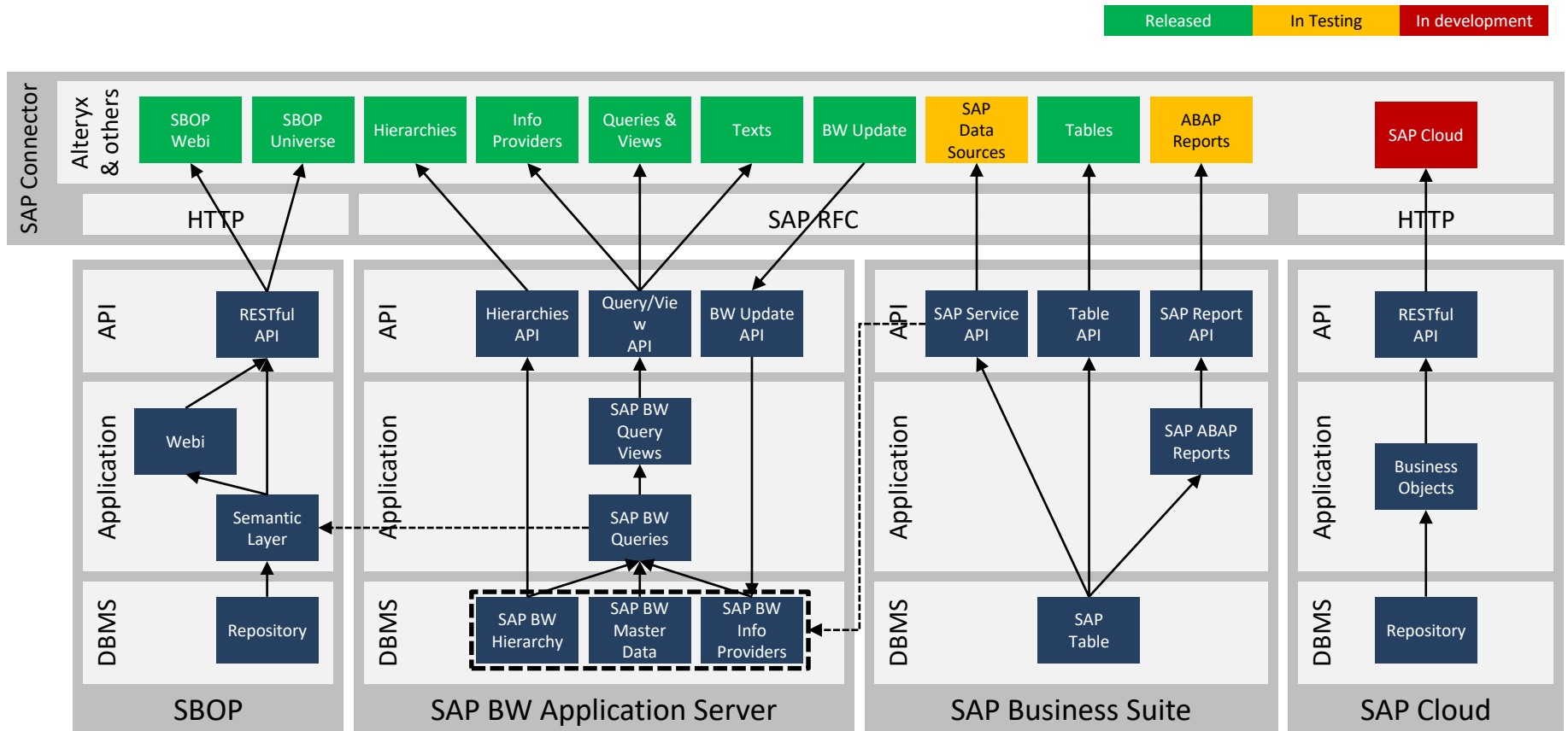
Alteryx Connector for SAP BusinessObjects

- BusinessObjects Universes
- BusinessObjects Webi

Alteryx Data Loader for SAP

- Load data into SAP BW

SAP CONNECTOR ARCHITECTURE



EXAMPLE OF ALTERYX CONNECTOR FOR SAP (SAP BW & SAP BUSINESS SUITE)

ACS FUNCTIONALITY

SAP BW Query

- Search for any SAP BW Query
- Enforces mandatory Variables
- Allows further narrow down of the results via Filters
- Allows to add or remove output Characteristics and Key Figures at will, thus you are in control of output
- Allows to bring Text fields at will
- Displays output metadata (list of output fields) even before execution starts, thus you know what to expect in the output and can control it
- Allows to search and execute Query Views
- Accepts Hierarchy based variables
- Allows dynamic setting of Variables and Filters, so that you can schedule the Query executions



Basic Parameters Input Selection Messages

Query Search

Search Object ☒ Query ☐ View

Enter Query/View Search Text

Z*demo01

Available Queries/Views

Orders Overview - [Z_ORDER_OVERVIEW_DEMO01]

☐ Bring Text Fields

☒ Display Zero Rows

Variables

	Variable	I/E	Sign	Low	High	
•	Fiscal Year Variant - [...]	I	EQ	K1	NonSelectable	<input type="button" value="v"/>
•	Transaction Type S (...)	I	BT	ESRV	ZTSV	<input type="button" value="v"/>
▶	Division P - [ZDIVISI...]	I	EQ	1	NonSelectable	<input type="button" value="v"/>

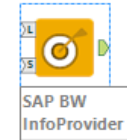
Filters

	Split	Field	I/E	Sign	Low	High	
	<input checked="" type="checkbox"/>	Calendar month - [0CALMONT...]	I	BT	02	08	<input type="button" value="v"/>
▶	<input type="checkbox"/>	Open Status - [ZST_OPEN]	I	EQ	X		<input type="button" value="v"/>

ACS FUNCTIONALITY

SAP BW InfoProvider

- Extract data directly from InfoCubes, MultiProviders, Virtual Providers, Datastore Objects, and InfoObjects
- Add output Characteristics and Key Figures at will
- Narrow down the output using Filters
- Allows dynamic setting of Filters, so that you can schedule the Query executions



The screenshot shows the SAP BW InfoProvider configuration interface. It includes tabs for Basic, Parameters, Input Mapping, and Messages. The 'Basic' tab is active, showing the 'InfoProvider Search' section with a search bar containing 'Z*order' and a 'Search' button. Below the search bar is a dropdown menu for 'Available InfoProviders' showing 'CRM Order Cube - [Z_ORDER01]'. There is a 'Refresh Metadata' button. The 'Characteristics' section has an 'Add' button and a table with columns 'Field' and a dropdown arrow. The 'Key Figures' section has an 'Add' button and a table with columns 'Field' and a dropdown arrow. The 'Filters' section has an 'Add' button and a table with columns 'Split', 'Field', 'I/E', 'Sign', 'Low', and 'High'. The 'Split' column has a checkbox, and the 'Field' column has a dropdown arrow. The 'I/E' column has a dropdown arrow, and the 'Sign' column has a dropdown arrow. The 'Low' and 'High' columns have input fields and a dropdown arrow.

Field
Billing Status - [ZST_BILL]
Cal. year / month - [0CALMONT...
Cal. year / quar - [0CALQUART...
Distribution Channel - [ZDISTC...
Fiscal year - [0FISCYEAR]
Fiscal Year Variant - [0FISCVAR...
Header Number - [Z_HDR]

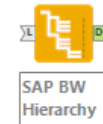
Field
Net Val in EUR - [ZNET_VAL2]
Net Val in USD - [ZNET_VAL3]
Net Val in EUR - [ZNET_VAL4]
Net Val in USD - [ZNET_VAL5]
Net Value - [ZNET_VAL]
Net Value in statistics currency (...)
Weight - [Z_WEIGHT]

Split	Field	I/E	Sign	Low	High
<input checked="" type="checkbox"/>	Division - [ZDIV]	I.	BT	01	09
<input type="checkbox"/>	Header Number ...	I.	EQ	00155D89AA201ED	

ACS FUNCTIONALITY

SAP BW Hierarchy

- Extract balanced/unbalanced hierarchy data in optimised flat tables
- Use any level in hierarchy to blend with other data sets using tools such as union and join



Basic Parameters Messages

Hierarchy Selection

Enter Query Search Text: Z*demo01

Available Queries/Views: Orders Overview - [Z_ORDER_OVERVIEW_DEMO01] ▼

InfoObjects with Hierarchies: Product Name [ZPRODUCT] ▼

Select Hierarchy: Product PPCS [UNBALANCED HIERARCHY / /99991231] ▼

Hierarchy Level: Level 5 ▼ ☐ Enable Logging

Hierarchy in SAP system

UNBALANCED HIERARCHY Product PPCS

Entire Hierarchy

- PPCS Level 1 **Nesting Level 1**
 - ShortZCSSRV_01
 - ShortINVESTIGATION
 - Dump Bucket **Nesting Level 2**
 - Not assigned **Nesting Level 3**
 - Not assigned
 - PPCS Level 3 **Nesting Level 4**
 - Short921001-01
 - Short904246-21
 - ShortSERVICE_MACHINE **Nesting Level 5**
 - Short20092-02

Hierarchy extracted in Alteryx

Level_1	Level_2	Level_3	Level_4	Level_5	Leaf_Node
PPCS LEVEL 1	ZCSSRV_01				ZCSSRV_01
PPCS LEVEL 1	INVESTIGATION				INVESTIGATION
PPCS LEVEL 1	DUMP BUCKET	#	#		#
PPCS LEVEL 1	DUMP BUCKET	#	PPCS LEVEL 3	921001-01	921001-01
PPCS LEVEL 1	DUMP BUCKET	#	PPCS LEVEL 3	904246-21	904246-21
PPCS LEVEL 1	DUMP BUCKET	#	PPCS LEVEL 3	SERVICE_MACHINE	SERVICE_MACHINE
PPCS LEVEL 1	DUMP BUCKET	20092-02			20092-02
PPCS LEVEL 1	DUMP BUCKET	908887-02			908887-02
PPCS LEVEL 1	DUMP BUCKET	908887-2			908887-2
PPCS LEVEL 1	DUMP BUCKET	IAJ_PROD1			IAJ_PROD1
PPCS LEVEL 1	DUMP BUCKET	IAJ_PROD2			IAJ_PROD2
PPCS LEVEL 1	PPCS LEVEL 2B	20092-01			20092-01
PPCS LEVEL 1	PPCS LEVEL 2B	20499-01			20499-01
PPCS LEVEL 1	PPCS LEVEL 2	05366-01			05366-01
PPCS LEVEL 1	PPCS LEVEL 2	10513-01			10513-01

ACS FUNCTIONALITY

SAP BW Text

- Extract text for any InfoObject
- Use InfoObject key to join the data with other tools
- Find text from Query, DataProvider or Masterdata tables



SAP BW Texts

Basic Parameters Messages

Hierarchy Selection

Enter Query Search Text: Z*demo01 Search

Available Queries/Views: Orders Overview - [Z_ORDER_OVERVIEW_DEM001]

InfoObject: Product Name [ZPRODUCT]

Max Records: 10000 Level: Query

Output

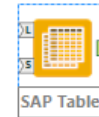
	Sel	InfoObject	Description	Role	Role_Description	Position
▶	<input checked="" type="checkbox"/>	ZPRODUCT	Product Name	INT	Internal - Compounded	1
	<input type="checkbox"/>	ZPRODUCT	Product Name	INT_NC	Internal - Non-Compoun...	2
	<input type="checkbox"/>	ZPRODUCT	Product Name	EXT	External - Compounded	3
	<input type="checkbox"/>	ZPRODUCT	Product Name	EXT_NC	External - Non-Compou...	4
	<input type="checkbox"/>	ZPRODUCT	Product Name	TXTSH	Text - Short	5
	<input type="checkbox"/>	ZPRODUCT	Product Name	TXTMD	Text - Medium	6
	<input checked="" type="checkbox"/>	ZPRODUCT	Product Name	TXTLG	Text - Long	7
*	<input type="checkbox"/>					0

☐ Enable Logging

ACS FUNCTIONALITY

SAP Table

- Connect directly to SAP Tables in BW and ECC systems
- Access complete list of table fields and their data types
- Find out the total record count without executing the data request
- Control the number of records in the output
- Control the output fields list
- Highly optimised data requests; user data requests are processed in smaller chunks and data is put together in the frontend before displaying, so that SAP system does not run out of time and memory
- Allows dynamic setting of Filters, so that you can schedule the Query executions



The screenshot shows the 'Basic' tab of the SAP Table configuration interface. It includes a 'Tables Search' section with an 'Enter Table Name' field containing 'but000*' and a 'Search' button. Below this is an 'Available Tables' dropdown showing 'BP: General data I - [BUT000]' and a 'Refresh Metadata' button. The 'Max Records' field is set to 50000, 'Packet Size' is 10000, 'Record Length' is 88, and 'Record Count' is 290. A table lists fields with checkboxes for selection: BPkind (4), BU_GROUP (4), BPEXT (20), BU_SORT1 (20), BU_SORT2 (20), SOURCE (4), TITLE (4), and XDELE (1). The 'Filters' section at the bottom shows a table with columns for Field, I/E, Sign, Low, and High, with a filter for 'BPartner - [PARTNER]'.

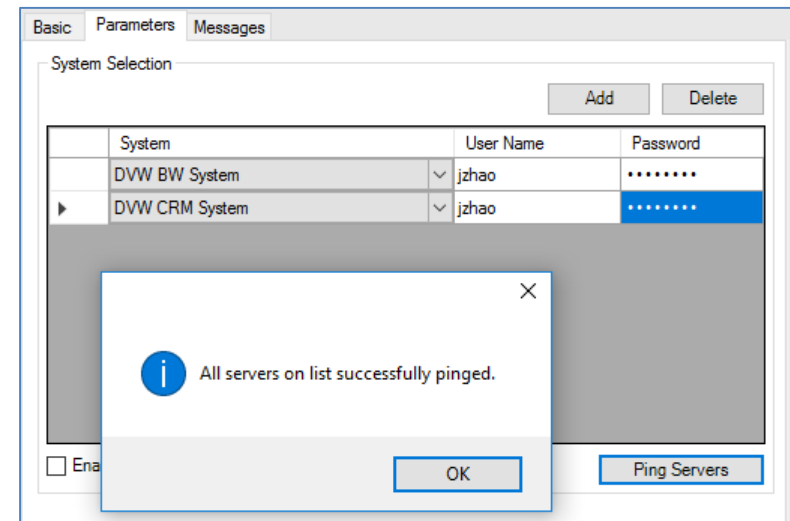
Select	Field	Description	Size
<input checked="" type="checkbox"/>	BPkind	BP type	4
<input checked="" type="checkbox"/>	BU_GROUP	Grouping	4
<input checked="" type="checkbox"/>	BPEXT	External BP number	20
<input checked="" type="checkbox"/>	BU_SORT1	Search Term 1	20
<input checked="" type="checkbox"/>	BU_SORT2	Search Term 2	20
<input checked="" type="checkbox"/>	SOURCE	Data origin	4
<input checked="" type="checkbox"/>	TITLE	Title	4
<input checked="" type="checkbox"/>	XDELE	Archiving flag	1

Field	I/E	Sign	Low	High
BPartner - [PARTNER]	I	BT	0000000001	0004000020

ACS FUNCTIONALITY

SAP Logon

- Login once per system and use that system to connect to as many SAP object as you like
- Allows to ping SAP systems, to discover connectivity
- Avoids users to lock themselves in SAP systems, as and when their SAP passwords are changed



GET A FREE TRIAL OF THE ALTERYX CONNECTOR FOR SAP

DISCOVER THE FASTEST, EASIEST WAY TO EXTRACT DATA FROM SAP INTO ALTERYX

WATCH THE DVW ALTERYX CONNECTOR FOR SAP PRODUCTS IN ACTION

www.dvwanalytics.com