

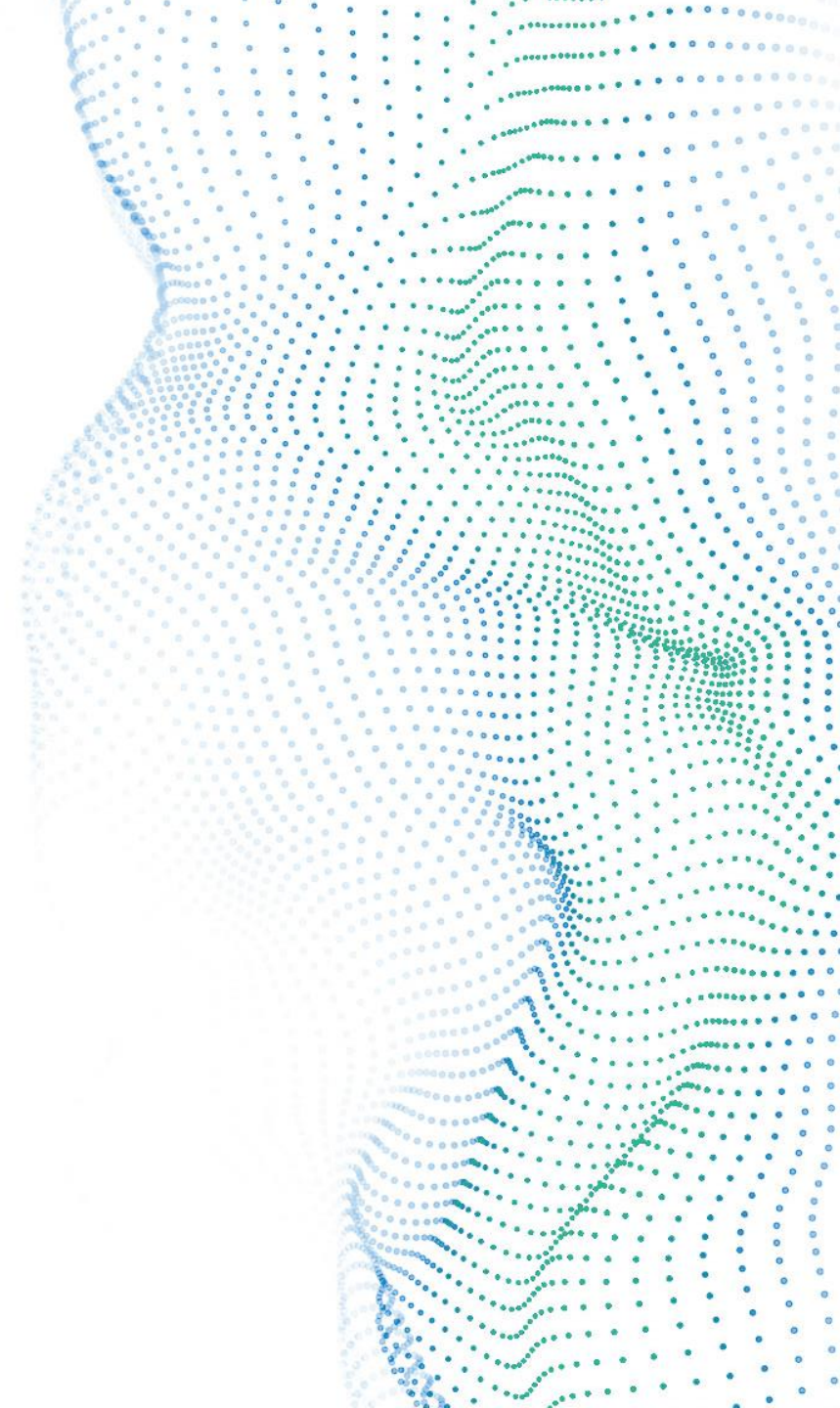
The Alteryx logo is displayed in a blue, lowercase, sans-serif font. It is positioned in the upper left corner of the slide. A solid blue vertical bar is located to the left of the logo.

alteryx

Chained Applications

First Last | Your Job Title

August 2021



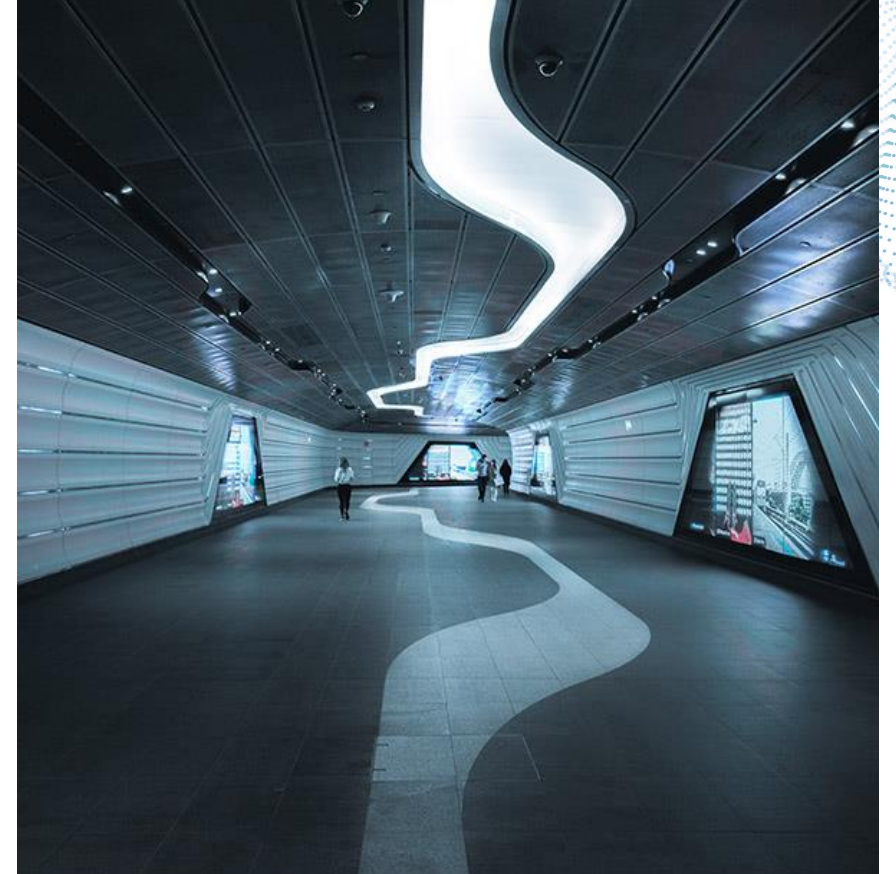
Agenda

1 Why Chained Applications?

2 Use Case & Key Concepts

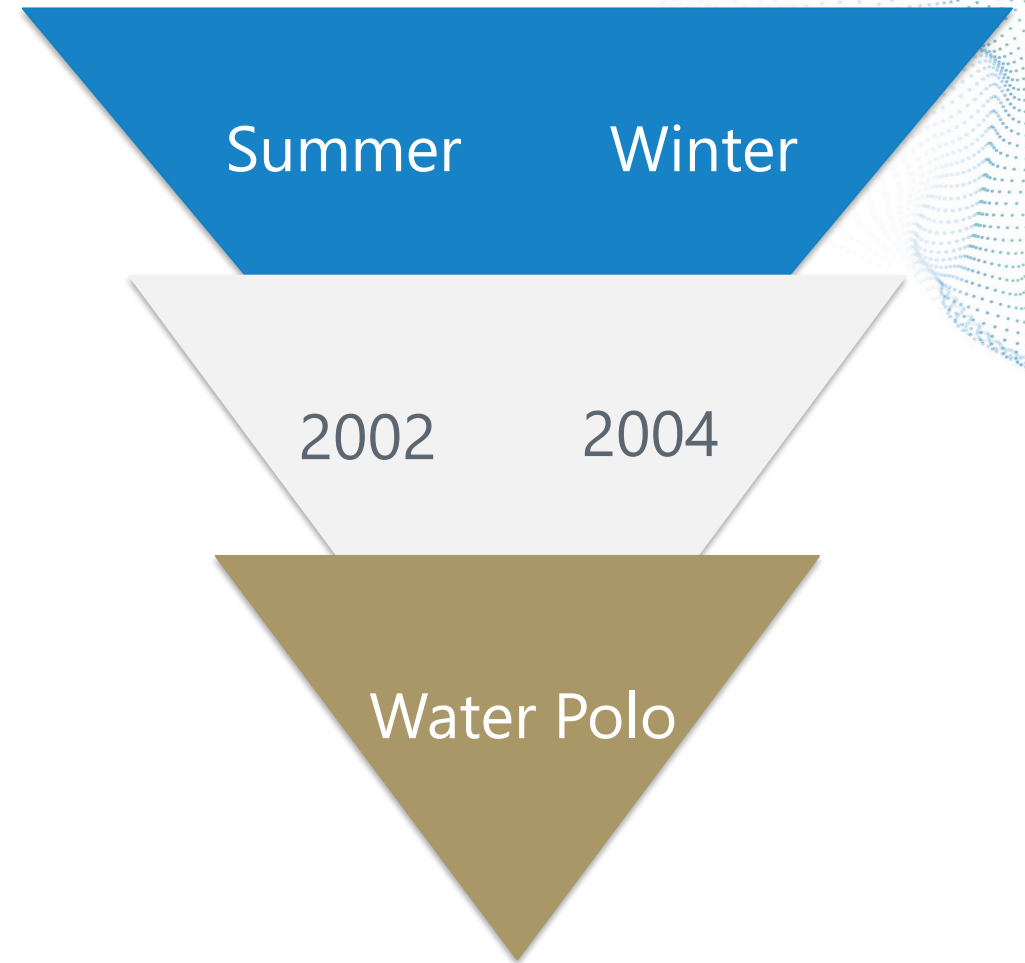
3 Interface Tools

4 Building Chained Apps



Why Chained Applications?

- Eliminate possibility to select invalid combinations of values
- Create a “narrowing” effect by displaying eligible values based on a user’s previous selection in an app interface
- Create “communication” between user and app interface based on user input





Use case

Issue:

You're designing an app, and you want an app interface to dynamically update based on a user's prior selection.

Goals:

Create an application that allows a user to:

Select values in an app interface using List Boxes and Drop Downs

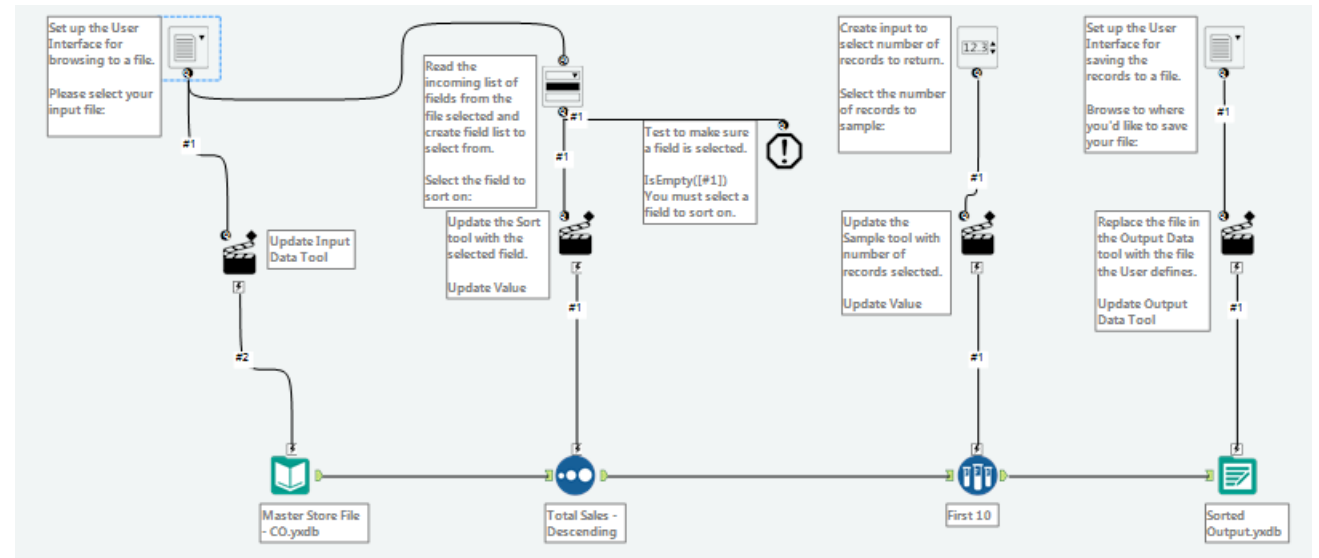
Choose values relevant to a selection made in a previous Question

View final results as pxml

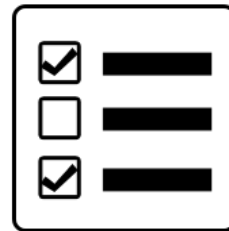
Key Concepts

PROCESSES COVERED

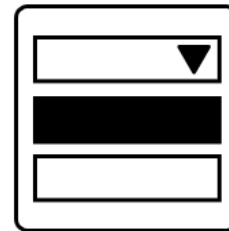
- Configure List Boxes and Drop Boxes to display values relevant to selections made in a previous window
- Use the Interface Designer to chain applications in a sequence



TOOLS COVERED



List Box



Drop Down



Action



Input Data

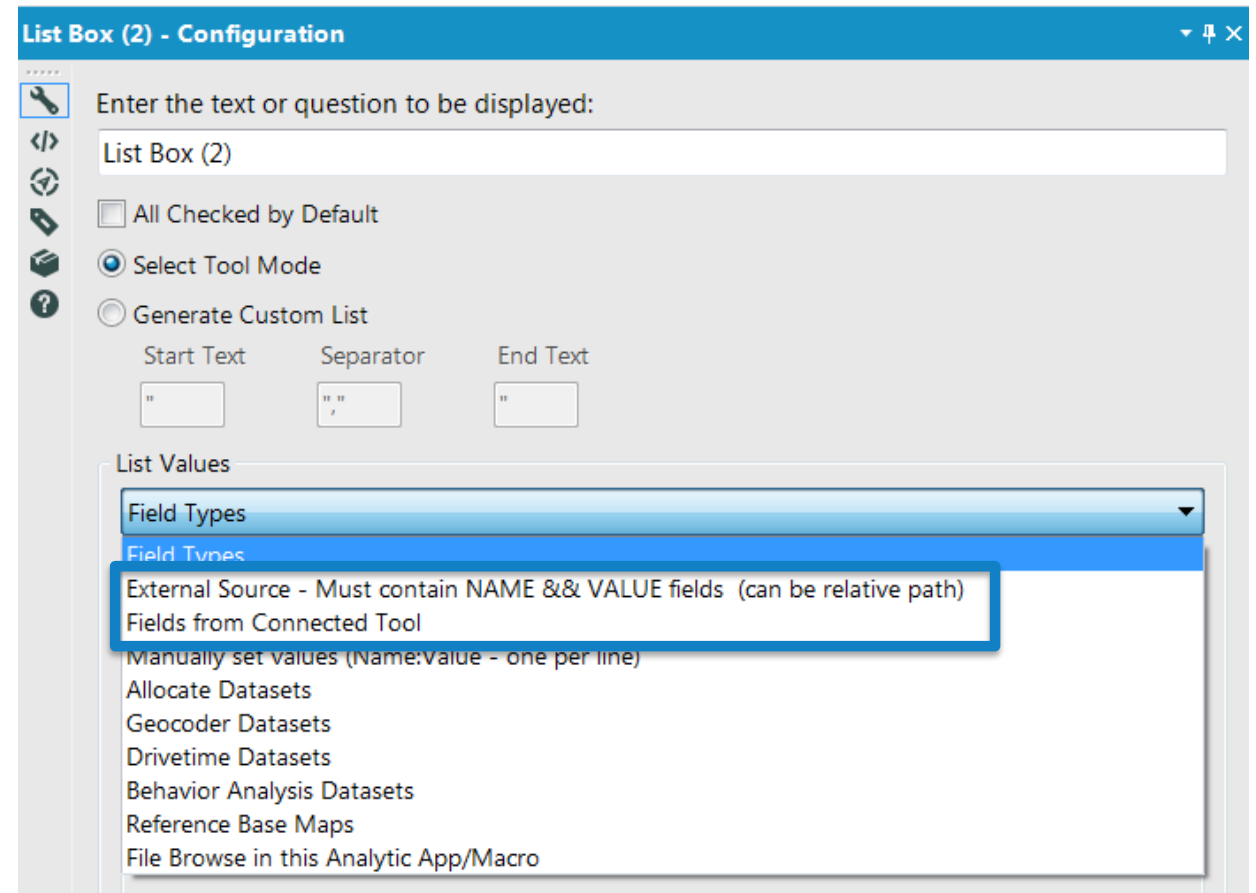


Output Data

Interface Tools

List Box / Drop Down

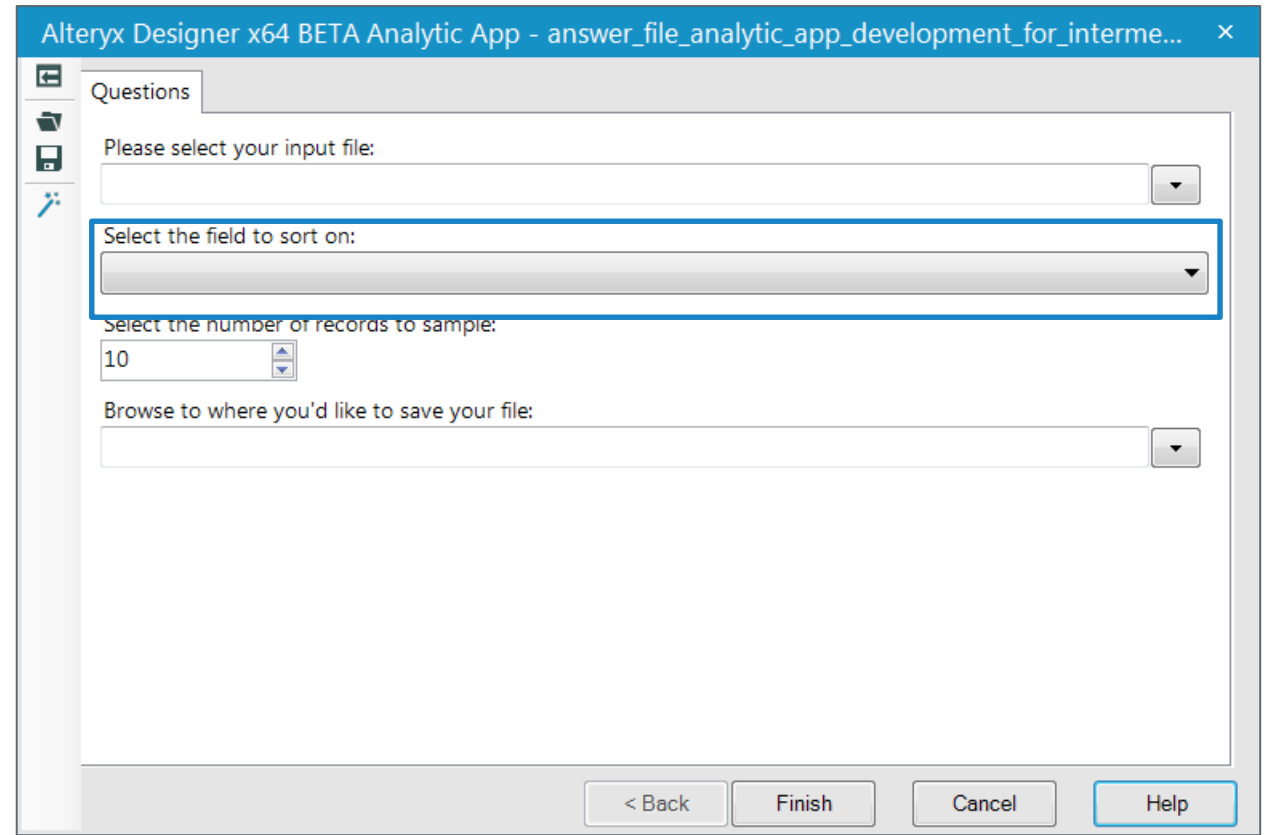
- Displays a list of values for a user to select from
- Values displayed in dropdown can be entered into the drop down a number of ways:
 - Manually
 - By Data Type
 - From a File
 - From Fields from a Connected Tool



Interface Tools

Drop Down

- Displays a list of values for a user to select from
- One and only one selection can be made
- Values displayed in dropdown can be entered into the drop down a number of ways:
 - Manually
 - By Data Type
 - From a File
 - From the Optional Input



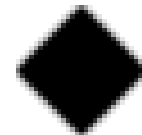
Interface Tools

Action

- Updates workflow with values from the interface
- Action tool has many different configurations
 - Configurations available vary by tool
- Download actions available on the help menu



Accepts output connections from interface tools with the same icon



Only accepts incoming connections from the conditional tool

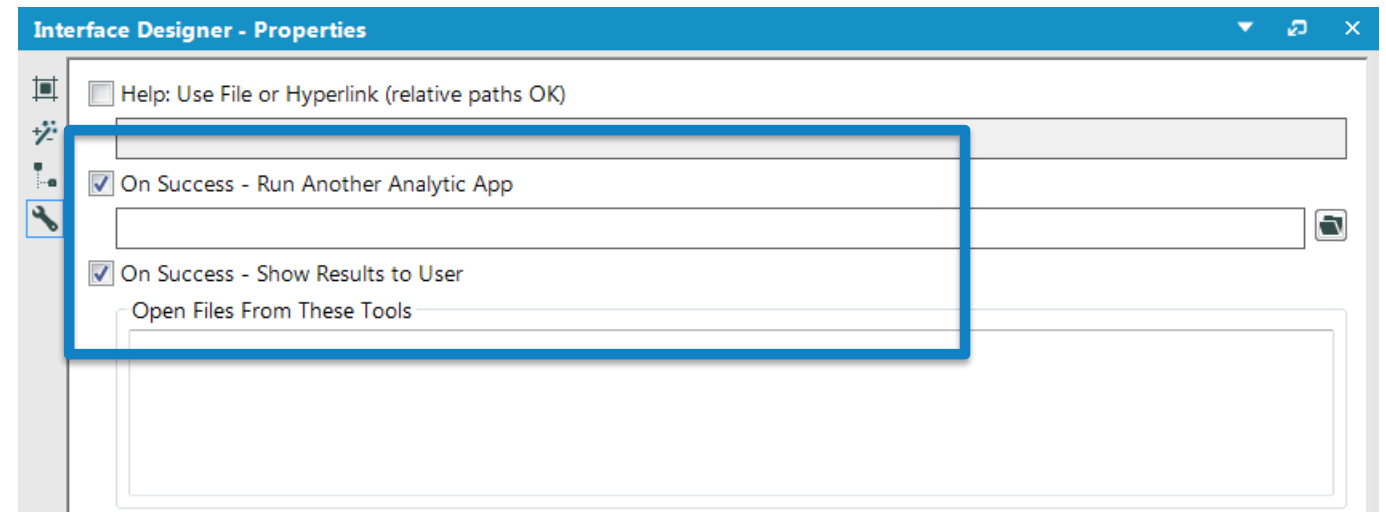


Connect lightning bolt to a workflow tool

Interface Tools

Interface designer

- Properties View (Wrench)
- Select to:
 - Run Another app upon successful completion of another
 - Display results to user



Chained Apps Best Practices

Interface designer

- %temp%
 - Do not use %temp% to write to the temp directory when building workflows or apps to be saved to the Gallery
 - Keep all file paths within the workflow. If developing a chained app, use only the file name rather than any file path, e.g., `.\fileOutput.yxdb` and not `%temp%\fileOutput.yxdb` or something similar
- Timeout Error
 - Each step in the chained app needs to complete in under 30 seconds
- Designing App Interfaces
 - Check out best practices for the interface on Community
 - <https://community.alteryx.com/t5/Interactive-Lessons/Designing-App-Interfaces/ta-p/243110>

Use Case: Building Chained Applications

Support Resources

Support Resources

1

ALTERYX COMMUNITY

Post your questions, search discussion forums, read Knowledge Base articles and contribute your knowledge at community.alteryx.com.

2

ALTERYX ACADEMY

Complete interactive lessons, participate in the Weekly Challenge and learn about product certification at academy.alteryx.com.

3

TECHNICAL SUPPORT

The Alteryx Global Customer Support Team is available to provide Customers with Support assistance and guidance on various issues and questions regarding supported versions of Alteryx Products.

<https://community.alteryx.com/t5/Support/bd-p/SupportPage>



alteryx

Thank you

First Last | Your Job Title

888.888.8888

email@alteryx.com

alteryx.com

